

WOMEN'S & MEN'S

HEALTHCARE  
APPAREL &  
FOOTWEAR



  
dansko®

FALL / WINTER 2012

## Why should feet have all the fun?

Dansko is head-to-toe! The legendary comfort you expect from us is now available in scrubs.

But don't just take our word for it...



{Dansko scrubs} are comfortable, well made, stylish, and still look great after 13 hours. I work as a Neuro-Stroke nurse. The work is difficult but rewarding!

— Annie B., RN



Women's Health Partners of St. Louis wearing our Gail pant and their favorite Professional Stapled clog.



These scrubs do a wonderful job of wicking away the sweat and keeping me dry and cool.

— Carol C., RN



Your shoes, hands down, are the best thing I've ever done for my feet! As a nurse there are days that I am on my feet for as long as 17 hours and I can go to work and know that my feet won't hurt at the end of the day.

— Heather R., LPN

As a new resident doctor, my Dansko clogs keep me comfortable and focused on my patients!

— Adam L., DO



## DISCOVER THE DANSKO DIFFERENCE

**Not Just A Pretty Face**  
Clean lines flatter your figure so you will always look and feel your best.

**Easy Care Fabrics**  
Wash after wash, these carefully constructed garments will retain their original appearance.

**Stay Cool Under Pressure**  
Even when your job is at its most demanding, you'll perform great in these highly functional garments.

**Flex And Bend And Twist**  
Our premium soft stretch fabric moves with you, shift after shift.

**Pocket Location, Location, Location**  
Loaded with functional pockets of all shapes and sizes.

**Legendary All-Day Comfort**  
Superior shock absorption and anti-fatigue rocker bottom keeps you going all day long.

AVAILABLE FOR WOMEN & MEN

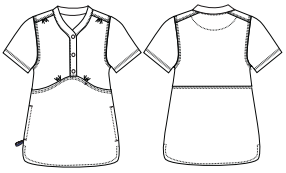
SHOWN ON COVER: Top: Greta, Purple Stretch Woven Bottom: Gina, Purple Stretch Woven Footwear: Professional Funky Knit  
SHOWN: Top: Greta, Teal Stretch Woven Bottom: Gina, Black Stretch Woven Footwear: Professional Black Mosaic

To see the full collection, visit [dansko.com](http://dansko.com)



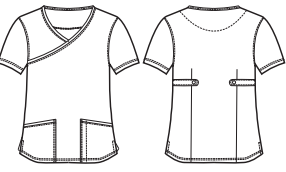
# WOMEN'S

## A Gloria



Available in solids and our new stylish Etching print, the Gloria top features a shaped empire seam with soft shirring. A secret zippered Lock-It pocket keeps valuables safe. Sizes XS – 5XL Available in 8 colorways – see page 12! Shown above: Ceil

## B Gwen

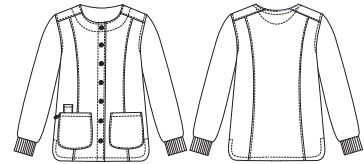


A very popular top, available in a large variety of solid and prints. Flattering for all shapes, the Gwen top is fully adjustable with tab buttons on the back. Sizes XS – 5XL Available in 23 colorways – see page 12! Shown above: Ceil Etching

### Mix & Match with our new Etching print top!

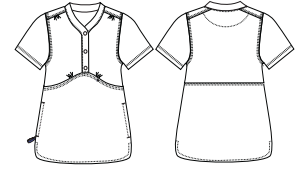
	Ceil Etching	Rose Etching	Teal Etching
Tops			
Coordinating Pant Options	Military	Wine	Black
	Galaxy	Amethyst	Military
	Ceil	Rose	Teal
	White	White	White

## Georgina



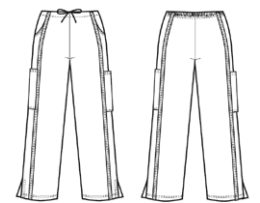
Stay warm under cool conditions with the new Georgina jacket, featuring a snap front closure, rib knit cuffs and a pen pocket. Sizes XS – XL Available in 3 colorways – see page 13! Shown right: White

## Gloria



Available in solids and our new stylish Etching print, the Gloria top features a shaped empire seam with soft shirring. A secret zippered Lock-It pocket keeps valuables safe. Sizes XS – 5XL Available in 8 colorways – see page 12! Shown right: Teal Etching

## Gina



The perfect silhouette for all body types, the mid-rise Gina pant contains a drawstring waist with back elastic for the ultimate in comfort. Sizes: R = XS – 5XL, P = XS – XL, T = S – XL Available in 18 colorways – see page 12! Shown right: Teal



Salina G., MD

The professional Gwen top looks great. I finish my look with Dansko stapled clogs. Comfy and cute from head to toe. Thanks Dansko, your products rock.



# PICK YOUR NEW FAVORITE!

A favorite of healthcare professionals for more than 20 years, the legendary Dansko Professional keeps you comfortable throughout your entire shift.

FOR MEN'S COLLECTIONS SEE PAGE 11!



## WOMEN'S SIZING

Dansko shoes are offered in European sizes. Find your U.S. size on this chart. For quick conversion, women add 30 to your U.S. size.

U.S.	4.5-5	5.5-6	6.5-7	7.5-8	8.5-9	9.5-10	10.5-11	11.5-12	12.5-13
EU	35	36	37	38	39	40	41	42	43

The Dansko Stapled outsole proudly carries the Seal of Acceptance from the APMA.



**Kathleen M. Stone**  
DPM, Former President of the American Podiatric Medical Association



"As one of the first comfort footwear companies to have products awarded the APMA Seal of Acceptance, Dansko has proven to promote quality foot health year after year. They've also managed to combine fashion and comfort in a very unique way with their quintessential clog styles of footwear."

- SHOWN ABOVE:**
- Top Row (Left to Right)*  
 BROWN TORTOISE SHELL  
 PURPLE PEARLIZED PATENT  
 NAVY MOSAIC  
 BROWN PEARLIZED PATENT  
 RED MARBLED PATENT  
 BLACK COATED CANVAS  
 BLUE MARBLED PATENT  
 CHERRY PATENT  
 BLACK MOSAIC  
 BLACK TOOLED  
 CORDOVAN CABRIO
- Bottom Row (Left to Right)*  
 MULTI RAINDROP PATENT  
 BLACK PATENT  
 BLUE DOT PATENT  
 FUNKY KNIT  
 BLACK CHERRY PATENT  
 PAINT SPLATTER PATENT  
 NAVY ARABESQUE  
 COPPER LEAF  
 PINK RIBBON PATENT  
 BLACK SCRIBBLE PATENT  
 BLUE WAVE PATENT  
 GREY PRISM PATENT  
 BLACK RIBBON PATENT

# INTRODUCING THE XP COLLECTION

OUR LATEST FOOTWEAR COMFORT INNOVATION

You are going to love the softer feel, lighter weight and impressive tech credentials of our new XP collection.

The XP collection proudly carries the Seal of Acceptance from the APMA.



**Removable footbed.** Triple density molded footbed is reinforced with memory foam for a softer feel. Footbed can be removed to accommodate orthotics.

**Lateral stability.** Metal shank in the midsole provides stability and reinforces construction for longer wear.



**Roomy design.** Allows toes to move comfortably.

**Lightweight construction.** Coring holes reduce weight for a lighter feel.

**Superior slip resistance.** Nitrile rubber outsole meets the highest standards of slip resistance.



## Tatum

**SLIP RESISTANT**

women's 35-42 (US 5-12)

Espresso Pull-up

Ebony Pull-up

## Pro XP

**SLIP RESISTANT**

women's 35-42 (US 5-12)

Black Patent

Espresso Pull-up

Ebony Pull-up



## Pro XP Swirl Patent

**SLIP RESISTANT**

women's 35-42 (US 5-12)

Brown Swirl Patent

Black Swirl Patent



## Pro XP Painterly Patent

**SLIP RESISTANT**

women's 35-42 (US 5-12)

## Gilda



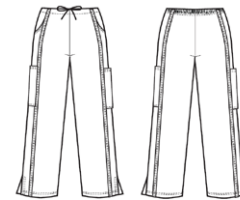
Fitted and flattering, the Gilda top boasts a bib front with placket and buttons, front princess seams and back darts.

Sizes: XS - 5XL

Available in 17 colorways - see page 12!

Shown right: Red

## Gina



The perfect silhouette for all body types, the mid-rise Gina pant contains a drawstring waist with back elastic for the ultimate in comfort.

Sizes: R = XS - 5XL, P = XS - XL, T = S - XL

Available in 18 colorways - see page 12!

Shown right: Red



Pamela C., DO

Well aware of the quality and comfort of the Dansko clogs, I suspected their apparel would also be top notch. They are the perfect fit and so flattering. These are my favorite scrubs. I need a pair in each color! No more hospital scrubs! **TWO thumbs up on your apparell!**



**MORE  
WORKPLACE  
COLLECTIONS TO LOVE!**

FOR EVEN MORE COLORS AND STYLES, CHECK OUT [DANSKO.COM](http://DANSKO.COM)

The collections on this page proudly carries the Seal of Acceptance from the APMA.



## AVALON COLLECTION

**Proven comfort.**  
Comfort and support in a unique design.

**Breathable design.**  
Cutouts promote air circulation.

**Durable construction.**  
Made from lightweight, long-wearing elastomers.



Style shown: Pixie Claret

## SANIBEL COLLECTION

**Part sneaker. Part clog.**  
All Dansko comfort.

**Slip resistant rubber outsole.**  
Plus custom tread design for exceptional grip.

**Lightweight construction.**  
A molded tuckboard adds support, not weight.



Style shown: Veda True Navy

## SAUSALITO COLLECTION

**Pillow-soft foot bed.**  
Combined with full foot support for all day comfort.

**Versatile.**  
Go day to night with modern styling.

**Lightweight construction.**  
Slim lines for a feminine look and lighter feel.



Style shown: Solstice Black

## ARCADIA COLLECTION

**Active styling.**  
Soft leather uppers on a low-profile shape for easy movement.

**Slip resistant outsole.**  
Sure footing no matter how slick the conditions.

**Removable foot bed.**  
Accommodates orthotics.



Style shown: Kip Chocolate

**HIGH PERFORMANCE  
SCRUBS AND SHOES  
THAT WORK AS HARD  
AS YOU DO.**



Footwear: Professional Black Mosaic

### Geri



With its soft scoopneck, scalloped hem and princess seams, the Geri top is elegant and simple. Also features fully adjustable back tab with buttons.  
Sizes: XS – 3XL  
Available in 7 colorways – see page 12!

Shown left: Military

### Gina



The perfect silhouette for all body types, the mid-rise Gina pant contains a drawstring waist with back elastic for the ultimate in comfort.  
Sizes: R = XS – 5XL, P = XS – XL, T = S – XL  
Available in 18 colorways – see page 12!

Shown left: Military



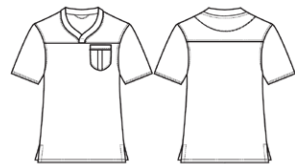
Deborah G., RN, VA-BC

“ I am an ER nurse and have worked 12 hour shifts for the last 15 years. I was excited when someone told me about Dansko, but I thought, “here goes yet another try for comfortable, supportive shoes.” I bought a pair and have worn them ever since! I wear them casually EVERYDAY! And now that my daughter is working in the ER.....what were the first shoes she bought? Why Dansko, of course! ”



# MEN'S

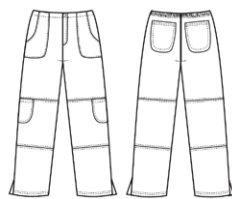
## Daniel



Classic styling, a curved v-neck with self banding and a cargo chest pocket contribute to making Daniel a top performer. Sizes: S – 3XL Available in 4 colorways – see page 13!

Shown left: Ceil

## Drew



With six patch pockets, a flat front waist with back elastic and hem vents, the Drew represents the intersection of comfort and function. Sizes: R = S – 3XL, T = M – 2XL Available in 4 colorways – see page 13!

Shown left: Ceil



Adrian H., DO



These scrubs are the softest I've ever felt. When you are running around a hospital all day, comfort is so important and **Dansko fits the bill. Trust me!**



Footwear: Professional Black Cabrio

# DON'T MISS A STEP WITH THESE WORKPLACE COLLECTIONS FOR MEN.



Styles shown:  
Professional Black Patent  
Professional Black Bullhide  
Professional Brown Bullhide

## STAPLED COLLECTION

**Firm foot & arch support.** Contoured insole keeps your foot supported and secure.

**Superior shock absorption.** Comparable to athletic footwear.

**Anti-fatigue rocker bottom.** Keeps you going all day long.

## WALDEN COLLECTION

**Removable triple-density foot bed.** Accommodates orthotics.

**Rugged styling.** Appropriate for active or casual wear.

**Slip resistant rubber outsole.** Meets industry requirements for slip resistance.



Styles shown:  
Wyatt Mocha  
Wynn Brown  
Wayne Black

## PRESIDIO COLLECTION

**Triple density support.** Layered contoured footbed for superior all-day comfort.

**Versatile dress collection.** Clean lines and classic details bring longevity to the designs.

**Sticky grip outsole.** Provides additional grip in adverse conditions.



Styles shown:  
Ty Brown  
Theo Black  
Travis Brown



Dansko shoes are offered in European sizes. Find your U.S. size on this chart. For quick conversion, men add 33 to your U.S. size.

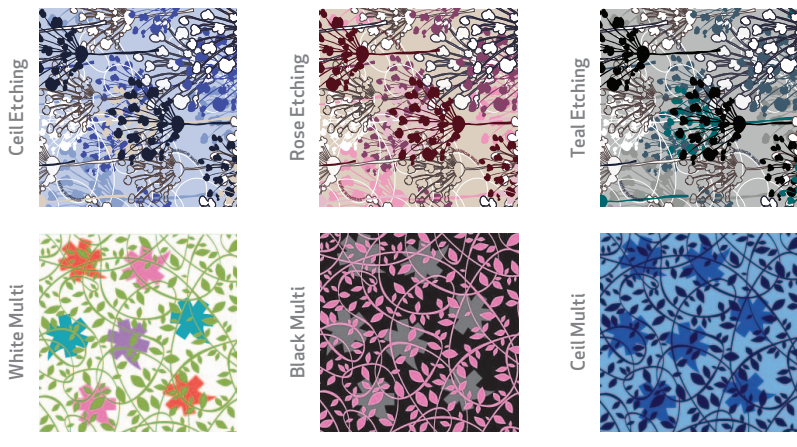
<b>U.S.</b>	7.5-8	8.5-9	9.5-10	10.5-11	11.5-12	12.5-13	13.5-14	14.5-15
<b>EU</b>	41	42	43	44	45	46	47	48

To see all collections for men, visit [dansko.com](http://dansko.com)

Sizes	WOMEN'S							
	Gwen	Gilda	Gina	Greta	Geri	Gloria	Grace	Gabby
XS-3XL*								
XS-3XL*	•	•	R = XS-3XL*, P = XS-XL, T = S-XL	•	•	•	•	•
Black	•	•	•	• Black Multi	•	•	•	•
White	•	•	•		•	•	•	•
Navy	•	•	•		•	•	•	•
Navy/Ceil	• Navy/Ceil							
Ceil	•	•	•	• Ceil Multi		•	•	•
Royal	• Royal/Navv							
Military	•	•	•					
Wine	•	•	•					
Leaf	•	•	•					
Amethyst	•	•	•					
Rose	•	•	•					
Tomato	•	•	•					
Aqua	•	•	•					
Teal	•	•	•	• Teal Multi	•	•		
Chocolate	•	•	•					
Purple	•	•	•	• Purple Multi	•			
Hunter Green	•	•	•					
Red	•	•	•					
Galaxy	•	•	•					
White Multi								
Black Multi								
Ceil Multi								
Rose Etching								
Teal Etching								
Ceil Etching								

\*Black, Navy, Ceil & Military also available in 4XL and 5XL

Sizes	WOMEN'S			MEN'S		
	Gail	Georgina	Glenda	Daniel	Douglas	Draw
R = XS-3XL, P = XS-XL, T = S-XL						
Black	•	•	•	•	•	•
White	•	•	•	•	•	•
Navy	•	•	•	•	•	•
Navy/Ceil						
Ceil	•			•	•	
Royal	•					
Military						
Wine						
Leaf						
Amethyst						
Rose	•					
Tomato	•					
White Multi						
Black Multi						
Ceil Multi						
Rose Etching						
Teal Etching						
Ceil Etching						



## WOMEN'S

### APPAREL

Size Range	XS	S	M	L	XL	2x	3x
<b>Size Comparison</b>	0-2	4-6	8-10	12-14	16-18	20-22	24-26
<b>Bust</b>	31-32	32.5-34.5	35-37	37.5-39	40-42	43.5-46.5	48-51
<b>Waist</b>	22.5-23.5	24-26	26.5-28	28.5-31	32-34	35.5-38.5	40-43
<b>Hip</b>	33-34.5	35-37.5	38-40	41-43	43.5-46	46.5-49	50-53

INSEAM (for size medium): petite = 28"; regular = 30.5"; tall = 32". Other sizes graded appropriately. Headwear is one size fits most.

## MEN'S

### APPAREL

Size Range	S	M	L	XL	2X	3X
<b>Chest</b>	34-36	38-40	42-44	46-48	50-52	54-56
<b>Waist</b>	28-30	32-34	34-36	38-40	40-42	44-46

INSEAM (for size large): regular = 30.5"; tall = 31.5". Other sizes graded appropriately.





33 Federal Road  
West Grove, PA 19390  
1.800.Dansko.4  
www.dansko.com

Find us on  
Facebook Twitter Pinterest

Certified



Corporation  
bcorporation.net



100%  
EMPLOYEE OWNED

Do the green thing. Pass this along to a friend.



**This brochure has been printed with the environment in mind.**  
**Technical speak to follow...**

Environmentally friendly non air-polluting inks were used on 100% post-consumer-waste Green Seal-certified recycled paper manufactured with all natural, wind generated electricity.

We want to make the future bright for everyone. That's why we offset 100% of our energy consumption. Energy certificates are used to develop emerging technologies that will help us make a sustainable planet for everyone.

Dansko, Dansko and the Wing Design, the Wing Design, the Doodad Design, PRO XP and XP are all trademarks of Dansko, LLC. © 2012 Dansko, LLC. The ESOP logo is a registered trademark of the ESOP Association. FW12\_072012ia

