

A woman with short dark hair, smiling, wearing light blue scrubs. She is holding a light blue folder. The background shows a clinical setting with shelves and a sink.

**WORK
WONDERS™**

dansko®
SPRING/SUMMER 2013
HEALTHCARE
APPAREL & FOOTWEAR

SPRING 2013 INSPIRATION



Soft & soothing pastels



Subtle shimmer



For Spring 2013, our color palette is soothing yet invigorating... a delicate balance to achieve in the busy life of any healthcare professional. We understand that you don't want to sacrifice style or comfort while at work. That's why, through our footwear and apparel, we are committed to taking care of you so you can take care of others.

Ann Dittrich,
Creative Director

Nature inspired florals



Light and airy
Sedona collection



GWEN

our ever-popular mock wrap style



Features:

- Subtle and modest v-neck
- Front patch pockets with inside cell phone pocket
- Button back tabs for complete adjustability

Sizes:

XS-3XL

Black, Navy, Military and Ceil also available in 4XL and 5XL.

Solid Content:

65% Polyester, 30% Rayon, 5% Spandex

Khaki	Camelia	Red
Seafoam	Teal	Military
Ceil	Galaxy	Navy
Black	White	

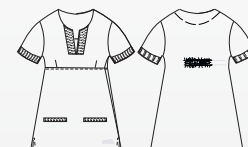
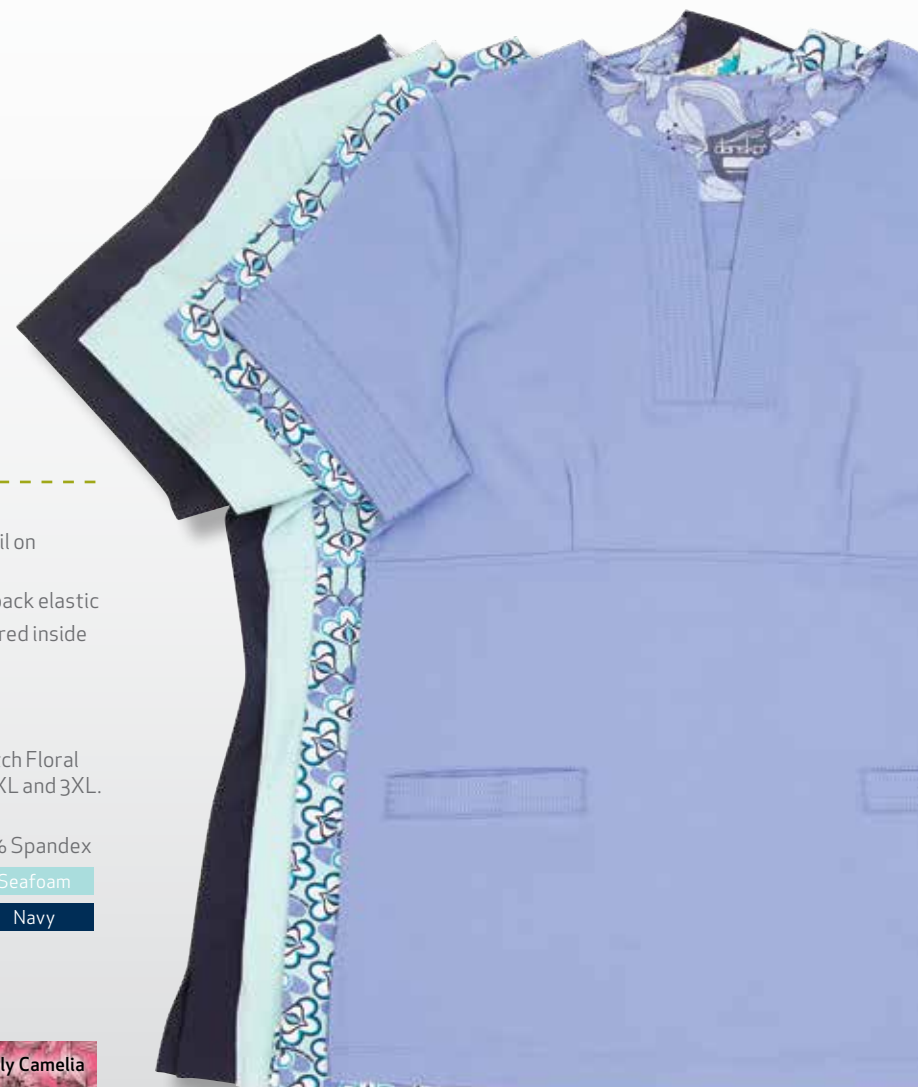
Print Content:

98% Cotton, 2% Spandex

Lily Khaki	Lily Ceil	Lily Camelia
Camelia Dutch Floral	Seafoam Dutch Floral	

GILLIAN

spa-inspired comfort with intricate and stylish stitching details



Features:

- Trapunto-style stitching detail on neckline and sleeves
- Flattering empire waist with back elastic
- Deep welt pockets with zippered inside Lock-It pocket

Sizes:

XS-XL

Khaki, Ceil, Navy, Black and Dutch Floral printed tops also available in 2XL and 3XL.

Solid Content:

65% Polyester, 30% Rayon, 5% Spandex

Khaki	Camelia	Seafoam
Ceil	White	Navy
Black		

Print Content:

98% Cotton, 2% Spandex

Lily Khaki	Lily Ceil	Lily Camelia
Camelia Dutch Floral	Seafoam Dutch Floral	

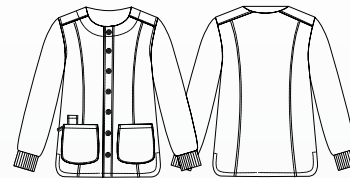


"[Dansko scrubs] are the finest scrubs in my collection, and without a doubt the most comfortable. They drape flawlessly, move with me, stretch when I need a little give and don't bunch or ride!" ~ **Lisa M., OH**



GEORGINA

snap front closure jacket for easy on and off



Sizes: XS-XL

Content:

65% Polyester, 30% Rayon, 5% Spandex

Black

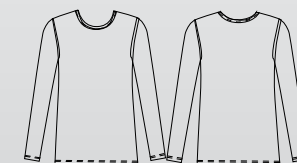
White

Navy



UMA

semi-fitted, soft and sleek for layering



Sizes: XS-XL

Black & White Content:
100% Cotton

Black

White

Heather Content:
90% Cotton, 10% Polyester

Heather

GINA

the ideal drawstring pant
with pockets galore



Features:

- Drawstring waist with back elastic
- Functional hip and side pockets
- Mid-rise
- Hem vents

Sizes: Reg. = XS-3XL*,
Petite= XS-XL, Tall= S-XL

*Black, Navy, Military and
Ceil also available in
4XL and 5XL

Content:
65% Polyester,
30% Rayon,
5% Spandex

Gina available:

- Red
- Camelia
- Ceil
- Teal
- Galaxy
- Navy
- Military
- Black
- White



GIGI

contemporary fit
with cargo conveniences



Features:

- Drawstring waist with back elastic
- Practical cargo-style pockets
- Contemporary low-rise
- Hem vents

Sizes: Reg. = XS-XL,
Petite= XS-XL, Tall= S-XL

Content:
65% Polyester, 30% Rayon,
5% Spandex

Gigi available:

- Black
- Navy
- Military
- Ceil
- Seafoam
- Khaki
- Camelia



"[The Gina pants] are they BEST. They are very comfortable
and really don't wrinkle! I love having all the pockets, too."
~ Penni J., FL





MEN'S

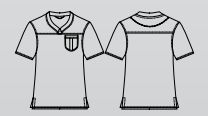


DOUGLAS



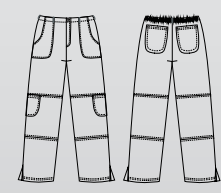
- Sizes: S-3XL
 Features:
 • Side slits
 • Rayon sleeves
 • Three patch pockets

DANIEL



- Sizes: S-3XL
 Features:
 • Curved V-neck with self banding
 • Yoke seam
 • Cargo chest pocket

DREW



- Sizes: Reg.= S-3XL, Tall= M-2XL
 Features:
 • Flat front waist with back elastic
 • Fly front with button closure
 • Six patch pockets
 • Topstitched knee seams
 • Hem vents

All men's styles available in the following colors:



"Let me preface that I have never received comments about my scrubs until I wore Dansko scrubs. 'Your scrubs look very nice, Paul!', 'Wow, good looking scrubs, Paul!'." - **Paul S., UT**

MORE TO LOVE

Calling all clog fans: pick your perfect clog.

Choose the original Stapled Professional or the new innovative Pro XP. Both offer the same great legendary Dansko all-day comfort.



Pick me: Stapled Professional

I started the comfort revolution!
Enjoy my shock-absorbing outsole
and firm and supportive footbed.

Pick me: Pro XP

I'm new to the family!
I'm slip resistant with
a soft cushioned
memory foam footbed.

Shown left to right:

Professional Fresco Patent (36-42, US 6-12)

Professional Drizzle (36-42, US 6-12)

Professional Navy Arabesque (36-43, US 6-13)

Pro XP Pastel Bouquet Patent (35-42, US 5-12)

Pro XP Lilac Moray Leather (35-42, US 5-12)

Professional Silver Opal Leather (36-42, US 6-12)

Professional Tiger Lily Patent (36-42, US 6-12)

Pro XP Whiskey Burnished Full Grain (35-42, US 5-12)

Pro XP Vintage Floral Leather (35-42, US 5-12)



Professional

women's 35-42 (US 5-12)

Multi Raindrop Patent *

Blue Marbled Patent *

Black Scribble Patent *

*Additional sizes or widths available. Please visit Dansko.com for more info.



Sonja

women's 35-42 (US 5-12)

Espresso Oiled Full Grain

White Box

Black Cabrio



Professional

women's 36-42 (US 6-12)

Black Cherry Patent

Brown Croc Patent

Copper Leaf Patent *

*Also available in size 43 (US 13)



Ingrid

women's 35-42 (US 5-12)

Black Box

White Box

Espresso Oiled Full Grain



Professional Oiled Full Grain

women's 35-43 (US 5-13)

Navy Oiled Full Grain

Ebony Oiled Full Grain

Red Oiled Full Grain

Espresso Oiled Full Grain*

*Also available in Narrow and Wide



Maryjane

women's 35-42 (US 5-12)

Espresso Oiled Full Grain

Ebony Oiled Full Grain



Gwen and Gina in galaxy pair perfectly with the Professional Navy Arabesque.



"Dansko has a proven track record of being one of the leading comfort footwear companies to promote quality foot health. They are also one of the first companies to have products awarded with the American Podiatric Medical Association's Seal of Acceptance." - **Joseph M. Caporusso, DPM, President of the American Podiatric Medical Association**

SEDONA

COLLECTION



Elise
SLIP RESISTANT
 women's 36-42 (US 6-12)
 Black/Purple Suede
 Blue Suede
 Grey Suede
 Mocha Suede
 Green Suede
 White/White Leather
 Black/Black Leather
 White/Blue Leather



Elin
SLIP RESISTANT
 women's 36-42 (US 6-12)
 Black Suede
 Grey Suede
 Mocha Suede



Emmy
SLIP RESISTANT
 women's 36-42 (US 6-12)
 Blue Suede
 Green Suede
 Mocha Suede
 Grey Suede
 Black Suede

Lightweight, flexible
and slip resistant!

SANIBEL

COLLECTION



Volley
SLIP RESISTANT
 women's 36-42 (US 6-12)
 White Box
 Black Box *
 *Also available in size 35 (US 5)



Valerie
SLIP RESISTANT
 women's 36-42 (US 6-12)
 Black Pull-up
 Brown Pull-up



Viv
SLIP RESISTANT
 women's 36-42 (US 6-12)
 White Coated Canvas
 Black Coated Canvas



Veda
SLIP RESISTANT
 women's 36-42 (US 6-12)
 Black Canvas*
 Black Pull-up
 Brown Pull-up
 *Also available in size 35 (US 5)

Slip resistant rubber
outsole and custom tread
design for exceptional grip.

Durable, lightweight and
long-wearing for any occasion.

AVALON

COLLECTION

Pixie
SLIP RESISTANT
 women's 36-42 (US 6-12)
 Black
 Claret
 Grey
 Navy



"[Sedona] is what I need for my quick paced job in the ICU... the style is contoured low to the ground and so light weight. The soles are slip resistant and are wonderful for quick steps around the hospital. I definitely recommend these shoes for my nursing friends."

~ Ashley O., PA

ARCADIA

COLLECTION



Kappy
SLIP RESISTANT
women's 36-42 (US 6-12)
Black Milled Leather
Chocolate Milled Leather



Kip
SLIP RESISTANT
women's 36-42 (US 6-12)
Chocolate Milled Leather
Black Milled Leather



Kitty
SLIP RESISTANT
women's 36-42 (US 6-12)
Chocolate Milled Leather
Black Milled Leather



Soft leather uppers on a low-profile shape for easy movement.



Kelsey
SLIP RESISTANT
women's 35-42 (US 5-12)
Black Milled Leather
Chocolate Milled Leather
(Also available in Black Pull-up)

SAUSALITO

COLLECTION



Stacie
women's 36-42 (US 6-12)
Black Full Grain
Brown Oiled Nubuck



Solstice
women's 36-42 (US 6-12)
White Leather
Chocolate Full Grain*
Black Full Grain*
*Available in sizes 35-43 (US 5-13)



Lightweight construction and slim lines for a lighter feel and feminine look.

MEN'S



Professional
men's 42-47 (US 8.5-14)
Brown Bullhide*
Black Bullhide*
Black Patent
*Available in size 48 (US 15)



Firm foot & arch support. Contoured insole keeps your foot supported and secure.



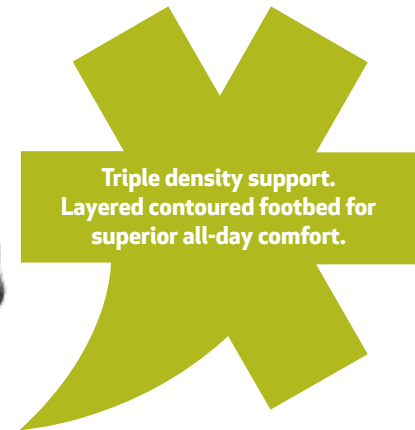
Slip resistant rubber outsole, perfect for active or casual wear.



Walden Collection
SLIP RESISTANT
men's 41-48 (US 7.5-15)
Wayne Black Full Grain
Wynn Brown Distressed
Wyatt Mocha Full Grain



Presidio Collection
men's 41-47 (US 7.5-14)
Travis Brown Full Grain
Theo Black Full Grain
Ty Brown Full Grain



Triple density support. Layered contoured footbed for superior all-day comfort.



For the full Dansko experience, visit danskocom.com

This catalog does a great job showing what we have to offer. But it can't do it all. You will find even more shoes, and more about Dansko, by visiting our website. Check out our store locator to pinpoint where to buy your favorite styles.

WOMEN'S						
	GILLIAN	GIGI	GINA	GWEN	UMA	GEORGINA
SIZES	XS - XL <i>(Khaki, Ceil, Navy, Black and printed tops also available in 2XL and 3XL)</i>	R = XS-XL P = XS-XL T = S-XL	R = XS-3XL P = XS-XL T = S-XL <i>(Black, Navy, Military and Ceil also available in 4XL and 5XL in regular length)</i>	XS-3XL <i>(Black, Navy, Military and Ceil also available in 4XL & 5XL)</i>	XS-XL	XS-XL
BLACK	•	•	•	•	•	•
WHITE	•		•	•	•	•
NAVY	•	•	•	•		•
HEATHER					•	
CEIL	•	•	•	•		
MILITARY		•	•	•		
SEAFOAM	•	•	•	•		
CAMELIA	•	•	•	•		
KHAKI		•		•		
TEAL			•	•		
GALAXY			•	•		
RED			•	•		
LILY KHAKI						
LILY CEIL						
LILY CAMELIA						
SEAFOAM DUTCH FLORAL						
CAMELIA DUTCH FLORAL						

MEN'S			
	DOUGLAS	DANIEL	DREW
SIZES	S-3XL	S-3XL	R = S-3XL T = M-2XL
BLACK	•	•	•
NAVY	•	•	•
CEIL	•	•	•
MILITARY	•	•	•

MIX & MATCH WITH DANSKO SHIFT AFTER SHIFT

	Lily Ceil	Lily Khaki	Lily Camelia	Camelia Dutch Floral	Seafoam Dutch Floral	Seafoam	Camelia	Khaki
Patterns & Colors								
Coordinating Colors	MILITARY NAVY	KHAKI MILITARY	CAMELIA MILITARY	CAMELIA MILITARY	TEAL GALAXY	MILITARY NAVY	KHAKI MILITARY	RED NAVY
	CEIL WHITE	BLACK WHITE	BLACK WHITE	BLACK WHITE	CEIL WHITE	CHOCOLATE BLACK	CHOCOLATE BLACK	GALAXY CAMELIA
Suggested Footwear								
	Professional Grey Prism Patent	Professional Silver Opal	Pro XP Red Moray	Professional White Patent	Professional Silver Opal	Pro XP Pastel Bouquet	Pro XP Vintage Floral	Professional Fresco Patent

APPAREL SIZING

WOMEN'S

Size Range	XS	S	M	L	XL	2x	3x
Size Comparison	0-2	4-6	8-10	12-14	16-18	20-22	24-26
Bust	31-32	32.5-34.5	35-37	37.5-39	40-42	43.5-46.5	48-51
Waist	22.5-23.5	24-26	26.5-28	28.5-31	32-34	35.5-38.5	40-43
Hip	33-34.5	35-37.5	38-40	41-43	43.5-46	46.5-49	50-53

INSEAM (for size medium): For GINA pant: petite = 29", regular = 31", tall = 33". For GIGI pant: petite = 29.5", regular = 31.5", tall = 33.5". Other sizes graded appropriately.

MEN'S

Size Range	S	M	L	XL	2X	3X
Chest	34-36	38-40	42-44	46-48	50-52	54-56
Waist	28-30	32-34	34-36	38-40	40-42	44-46

INSEAM (for size large): regular = 30.5", tall = 31.5". Other sizes graded appropriately.

FOOTWEAR SIZING

WOMEN'S

US	4.5-5	5.5-6	6.5-7	7.5-8	8.5-9	9.5-10	10.5-11	11.5-12	12.5-13
EU	35	36	37	38	39	40	41	42	43

MEN'S

US	7.5-8	8.5-9	9.5-10	10.5-11	11.5-12	12.5-13	13.5-14	14.5-15
EU	41	42	43	44	45	46	47	48



Dansko is proud to carry the **American Podiatric Medical Associations (APMA) Seal of Acceptance** on many of its collections. The APMA awards the Seal after rigorously evaluating a product to determine if it promotes quality foot health.



33 Federal Road
West Grove, PA 19390
1.800.Dansko.4
www.dansko.com

Find us on  Facebook  Twitter  Pinterest

Certified



Corporation
bcorporation.net



100%
EMPLOYEE OWNED

Do the green thing. Pass this along to a friend.



 Recycled
printing inks made with
www.fsc.org Cert no. BFCOC-09926
© 1996 Forest Stewardship Council

This brochure has been printed with the environment in mind. Technical speak to follow...

Environmentally friendly non air-polluting inks were used on 100% post-consumer-waste recycled paper.

We want to make the future bright for everyone. That's why we offset 100% of our energy consumption. Energy certificates are used to develop emerging technologies that will help us make a sustainable planet for everyone.

Dansko, Dansko and the Wing Design, the Wing Design, the Doodad Design, PRO XP, and XP are all trademarks of Dansko, LLC. © 2012 Dansko, LLC. The ESOP logo is a registered trademark of the ESOP Association. 5513.12172C5